

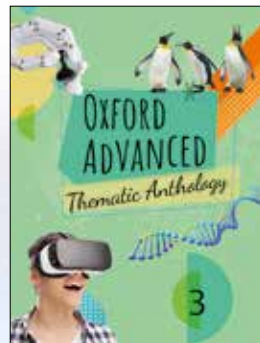
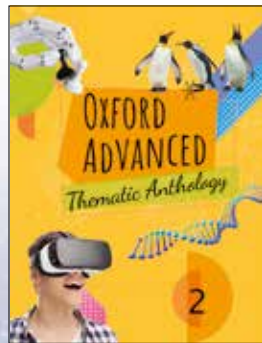
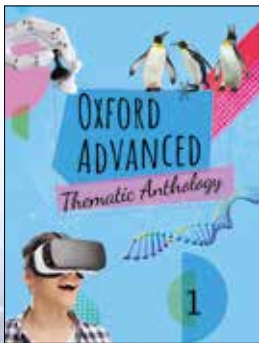
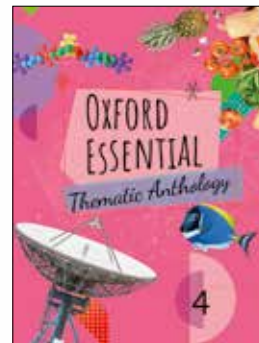
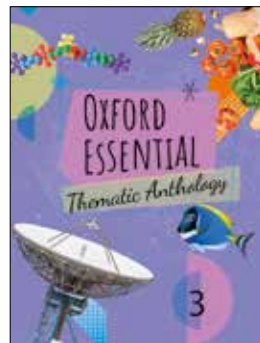
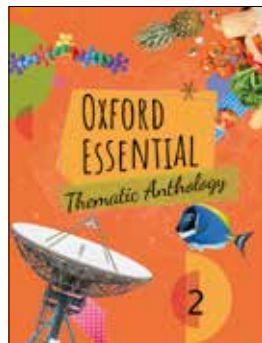
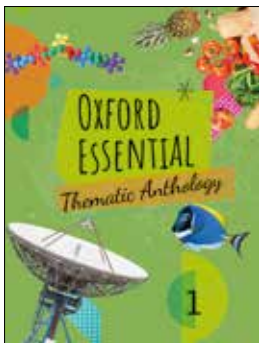
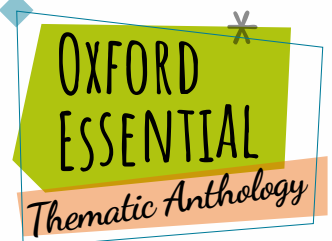
**NEW
in 2019**

OXFORD

Oxford ESSENTIAL and ADVANCED Thematic Anthology

for Junior and Senior Secondary

ENRICH your world • Broaden your scope

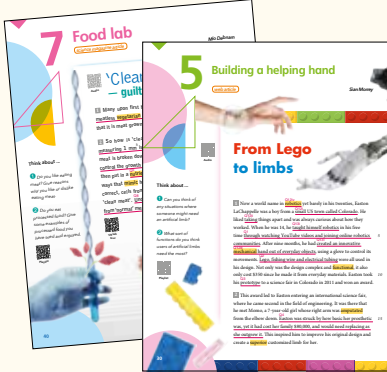


Extensive coverage of topics and text types

Fascinating and thought-provoking topics

New

New literacy and LaC support

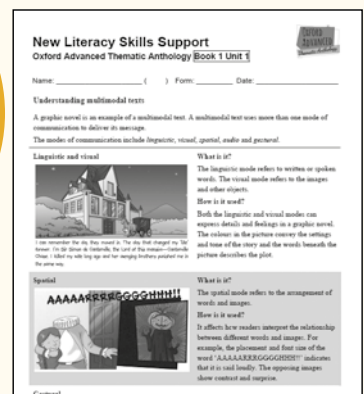


STEM

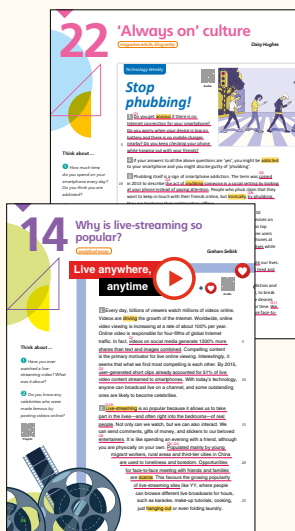


Global issues

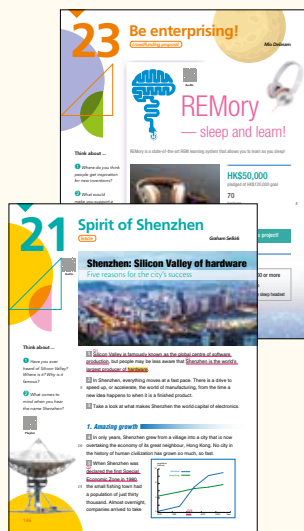
60+ language arts and non-language arts text types



New Literacy Support



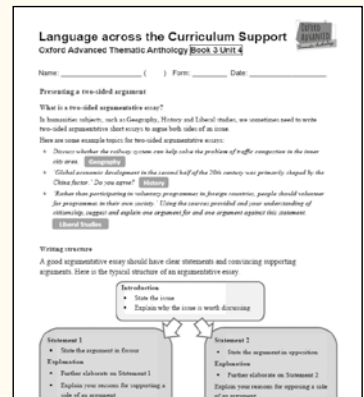
Current issues



Business topics



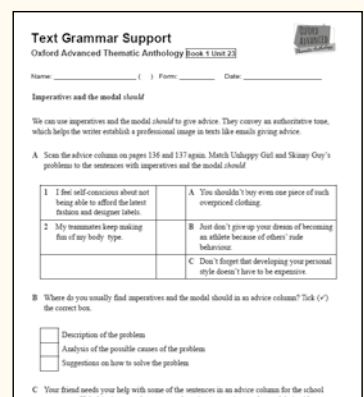
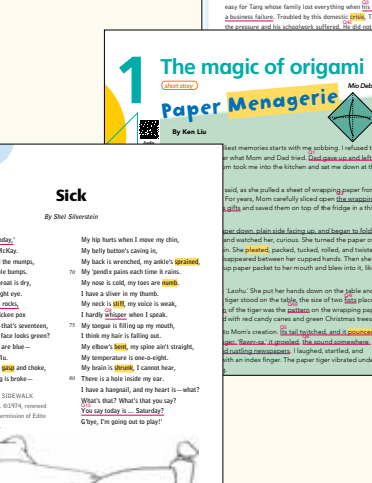
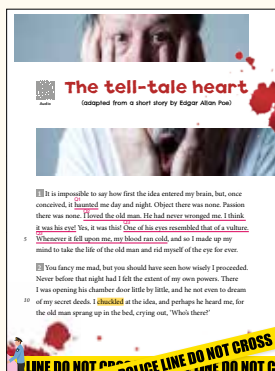
Local topics



LaC Support

Authentic texts for exposure and exam preparation

- articles from SCMP and AFP, etc.
- language arts texts from authors such as Oscar Wilde, Roald Dahl and George Orwell



Text Grammar Support

Virtual tutorial

Try me!



New literacy

new

Reference levels for progression

★ Corresponding CEFR levels

CEFR	A1	A1+	A2	A2+	B1	B1+	B2	B2+	C1	C2
Book 4										
Book 3										
Book 2										
Book 1										

**OXFORD
ESSENTIAL**
Thematic Anthology

CEFR	A1	A1+	A2	A2+	B1	B1+	B2	B2+	C1	C2
Book 4										
Book 3										
Book 2										
Book 1										

**OXFORD
ADVANCED**
Thematic Anthology

★ Readability index based on Flesch Reading Ease Score

Score*	School level	Description
100–90	P5	Very easy to read
90–80	P6	Easy to read
80–70	S1	Fairly easy to read
70–60	S2 & S3	Easily understood by 13–15-year-olds
60–50	S4–S6	Fairly difficult to read
50–30	University	Difficult to read
30–0	Uni graduate	Very difficult to read

→ Book 1
→ Books 2 & 3
→ Book 4

*Higher score = simpler words and shorter sentences

new

Immersive learning experience

★ VR 360° photos & videos



**Try
me!**
360°



VR light
pollution

★ AR



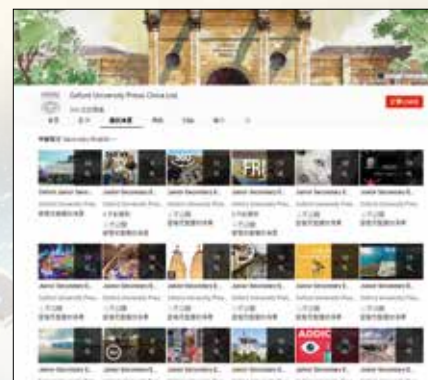
★ STEM DIY videos



★ Thematic videos



★ Video playlists



★ Aerial videos



**360° Try
me!**



Playlist

New

Current Affairs Archive

- ★ Each set comes with two levels of difficulty
- ★ HKDSE-style questions
- ★ Useful sentence patterns, vocabulary and phrases from the passages

World's first monkey clones created in a Chinese laboratory

[1] For the first time, scientists have engineered a pair of monkey clones using the somatic cell nuclear transfer (SCNT) technique, also known as the Dolly method. Dolly the sheep was the world's first mammal to have been successfully cloned from an adult cell. Using the same technique to clone monkeys is a major breakthrough for scientists, as monkeys are genetically similar to humans.

5 [2] The long-tailed macaques, named Zhong Zhong and Hua Hua, were made from foetal cells developed in a petri dish. The monkeys are identical twins and carry the same genetic information of the monkey foetus that supplied the original DNA.

[3] Before Dolly the sheep was cloned in 1996, scientists could only create clones using the DNA from embryos. This method is not too challenging because embryonic cells are undifferentiated and hence have the ability to grow into the different kinds of cells that formed a living organism. The Dolly method is different. It involves taking the DNA-carrying nucleus of a specialized adult cell from a part of an animal's body, and inserting it into an unfertilized egg cell that has had its own nucleus

Hong Kong-Zhuhai-Macau Bridge open for business

[1] The Hong Kong-Zhuhai-Macau Bridge was opened to the public yesterday by Chinese president Xi Jinping, a day after its opening ceremony on 23 October 2018. The Hong Kong-Zhuhai-Macau Bridge, or HZMB for short, is a 55-kilometre long bridge-tunnel system consisting of three overseas bridges and an undersea tunnel. About 400,000 tonnes of steel were used during its construction. The HZMB connects three major cities on the Pearl River Delta in south-eastern China—Hong Kong, Macau and Zhuhai. It is the world's longest sea crossing and the sixth longest bridge on Earth.

5 [2] Hong Kong businessman Gordon Wu first put forward the idea of a bridge-tunnel connecting Mainland China, Hong Kong and Macau in the 1980s. Wu had been inspired by the Chesapeake Bay Bridge project in San Francisco, which connects the Eastern and Western Shores of Maryland.

Answer the following questions using information from the text. Write your answers in the spaces provided. For multiple-choice questions, choose the best answer and blacken ONE circle only.

- Why is cloning monkeys using the Dolly method a major breakthrough for scientists?
- What species are Zhong Zhong and Hua Hua?
- When was Dolly the sheep cloned?
- Order the following steps of the Dolly method. Number the steps (1–4).
The nucleus is inserted into an egg cell.
The egg cell is implanted into a surrogate mother.
The nucleus is taken from an animal's cell.
An electric current is used on the egg cell.

Higher-order thinking

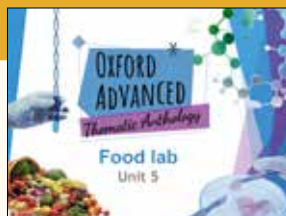
- ★ Develop critical-thinking skills
- ★ TSA & HKDSE-style questions

TSA

HKDSE

New

Comprehension PowerPoints with detailed answer explanations



14 According to the listicle, are the following statements **True (T)**, **False (F)** or **Not Given (NG)**?

Statements	T	F	NG
i) Many teens eat and study in their bedrooms.	<input type="radio"/>	<input type="radio"/>	<input type="radio"/>
ii) 50% of the things we buy are only used once.	<input type="radio"/>	<input type="radio"/>	<input type="radio"/>
iii) The writer donates a lot of old clothes and toys.	<input type="radio"/>	<input type="radio"/>	<input type="radio"/>
iv) The writer is probably a teenager.	<input type="radio"/>	<input type="radio"/>	<input type="radio"/>

For further thought

Discuss the following in a small group.

Have you and your family ever tried to reduce clutter in your home? Why/why not? If yes, what are some decluttering strategies you know about or have tried? How effective were they?

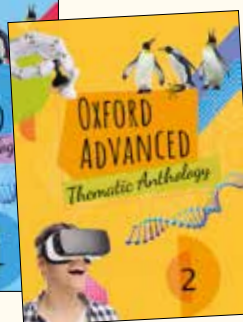
HKDSE-style questions

New

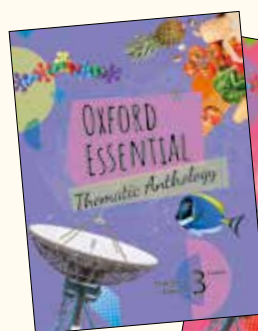
Hint for challenging questions

The components of Oxford Essential and Advanced Thematic Anthology include:

- Books 1–4 (Student's Edition)
- E-books



- Books 1–4 (Teacher's Edition)



iSolution

- Companion website

For enquiries, contact the OUP Account Executive for your area:

Eric Lam	6112 9493	Tai Po, Sha Tin, Ma On Shan
Winnie Wong	6323 2905	Eastern District, Southern District, Tsuen Wan
Tevinny Liu	6112 8248	North District, Yuen Long, Tin Shui Wai, Tung Chung, Outlying Islands
Alice Lam	6208 6017	Central District, Western District, Wan Chai, Kwun Tong, Tseung Kwan O, Sai Kung
Barry Kwok	6323 2902	Tsim Sha Tsui, Yau Ma Tei, Mong Kok, Kwai Chung, Tsing Yi, Tuen Mun
Alex Au Yeung	6323 2903	Sham Shui Po, Kowloon City, Wong Tai Sin
Hoisy Wong	6208 6025	All districts (Hong Kong)