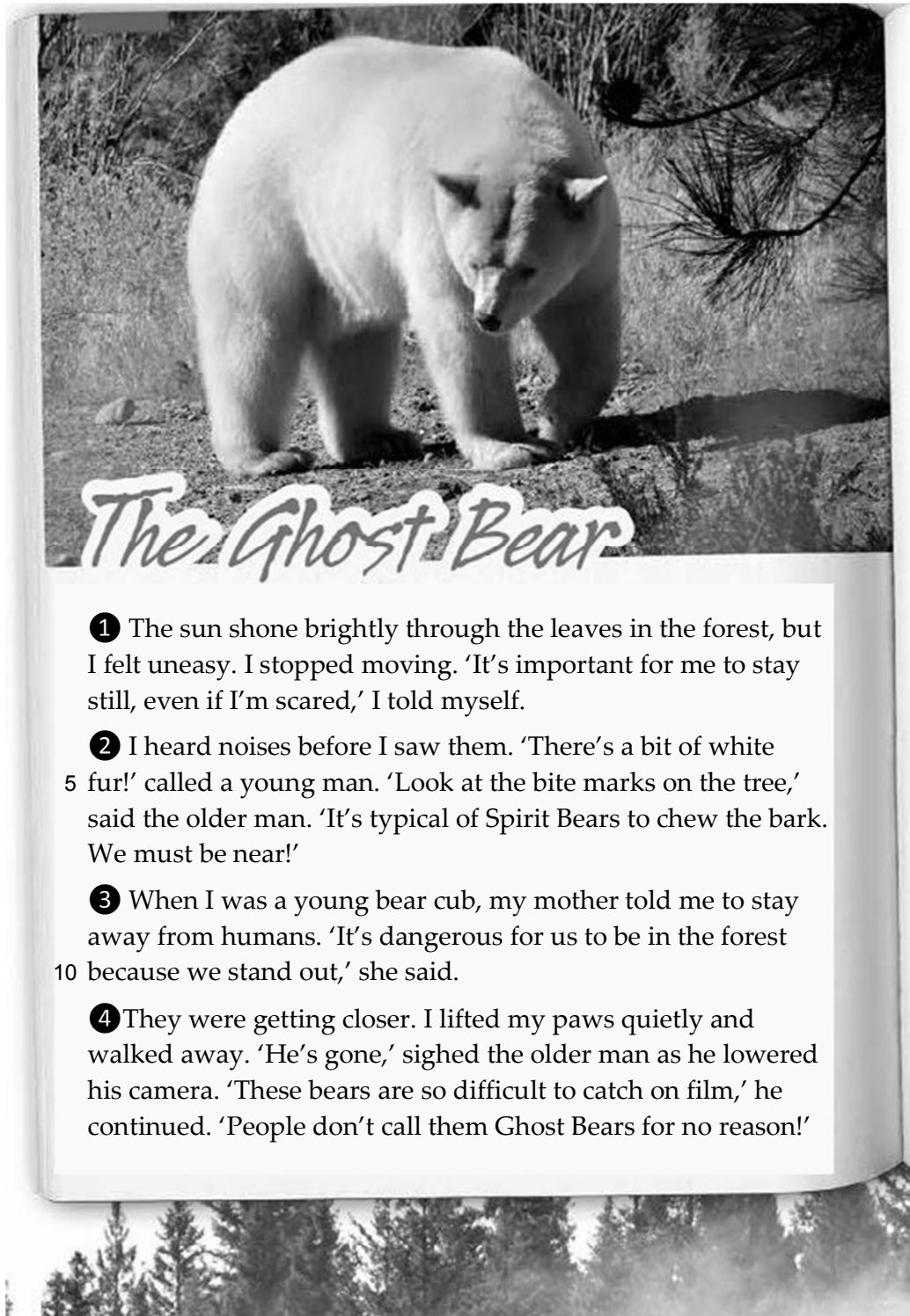


Name: \_\_\_\_\_ ( ) Class: \_\_\_\_\_ Date: \_\_\_\_\_

*You are reading a story about the Spirit Bear, an unusual white bear in western Canada. Read the story.*

**Text 2 Story in the first person**



## Simplified reading and comprehension

## Unit 5

Name: \_\_\_\_\_ ( ) Class: \_\_\_\_\_ Date: \_\_\_\_\_

**Comprehension 2** *Your younger brother wants to know more about the story. Answer his questions using information from the story. For multiple-choice questions, choose the best answer and blacken ONE circle only.*

- 1 Use one word to complete the blank.  
The story takes place in a \_\_\_\_\_.
  
- 2 How does the bear feel in paragraph 1?  

A afraid	C excited	A B C D
B calm	D confused	<input type="radio"/> <input type="radio"/> <input type="radio"/> <input type="radio"/>
  
- 3 Who does 'them' refer to in line 4?  

A Spirit Bears	C the two men	A B C D
B the leaves	D the marks on the tree	<input type="radio"/> <input type="radio"/> <input type="radio"/> <input type="radio"/>
  
- 4 The men knew the bear was near because \_\_\_\_\_.  

A they were close to a river		
B they could hear the bear moving		
C they saw the bear in the distance		A B C D
D they found some white fur and bite marks		<input type="radio"/> <input type="radio"/> <input type="radio"/> <input type="radio"/>
  
- 5 Find a word in paragraph 2 that means 'common and usual'. \_\_\_\_\_
  
- 6 Why is it dangerous for Spirit Bears to be in the forest?  

A Humans like to hunt them.		
B Their white fur makes them stand out.		
C There is not much food for them there.		A B C D
D Humans want to take photos of them.		<input type="radio"/> <input type="radio"/> <input type="radio"/> <input type="radio"/>
  
- 7 The men are probably \_\_\_\_\_.  

A hunters	C businessmen	A B C D
B film-makers	D tourists	<input type="radio"/> <input type="radio"/> <input type="radio"/> <input type="radio"/>
  
- 8 What did the older man mean when he said 'People don't call them Ghost Bears for no reason!' (line 14)?  

A It is difficult for people to recognize a Spirit Bear.		
B It is impossible for people to take photos of a Spirit Bear.		
C It is dangerous for people to meet a Spirit Bear.		A B C D
D It is very rare for people to see a Spirit Bear.		<input type="radio"/> <input type="radio"/> <input type="radio"/> <input type="radio"/>