

Extra-usually Silly Similes

When you describe something by comparing it to something else, you are using a SIMILE.

'You is only interested in guzzling human beans.' 'And you is dotty as a dogswoggler!' cried the Bloodbottler.—THE BFG

Similes make splendiferous insults, especially ones that use alliteration. Here are some similes that Roald Dahl uses to describe someone as slightly dotty:

as **batty** as a **bullfrog**
as **crazy** as a **crumpet**
as **dotty** as a **doughnut**
as **potty** as a **pilchard**
as **quacky** as a **duckhound**
as **dotty** as a **dogswoggler**



You can use the same techniques to make up your own dotty, silly similes. For an **extra-redunculous** simile, choose something that is spotted or dotty already for your comparison:

as **dotty** as a **currant bun**
as **dotty** as a **Dalmatian**
as **dotty** as a **Pink-Spotted Scrunch**
as **dotty** as a **Spotted Whangdoodle**

Not all similes have to be dotty however! You can turn any **extra-usual** creature into a silly simile.

as **crazy** as a **cockatootloo**
as **fussy** as a **fogglefrump**
as **grubby** as a **grobblequirt**
as **quacky** as a **quogwinkle**





cockatootloo *noun* and **foggelfrump** *noun*

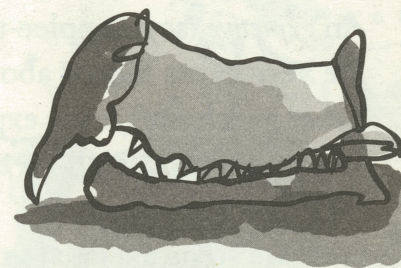
The *cockatootloo* and the *foggelfrump* are quiet and docile animals that live in Giant Country.

gobblesquirt *noun*

The *gobblesquirt* is a creature that is hunted by witches to make Formula 86 Delayed Action Mouse-Maker.

quogwinkle *noun*

A *quogwinkle* is a creature from outer space that makes regular visits to Giant Country.



!!ROTSOME TIP!!

You can make silly similes with
REDUNCULOUS objects, too:
as silly as a sizzlepan
as daft as a doormat